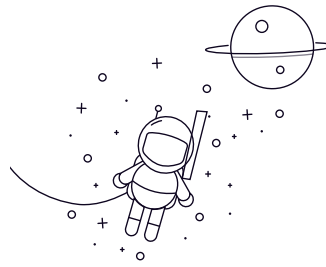
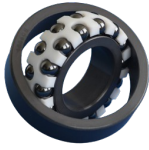


## Self-aligning Ball Bearing (SSiC)



| select Inquiry Tojo Number | Dimentions□(mm) |     |    |         |        |        | Mounting Dimentions(mm) |  |
|----------------------------|-----------------|-----|----|---------|--------|--------|-------------------------|--|
|                            | d               | D   | B  | r(min□) | da min | Da max | ra max                  |  |
| 2313                       | 65              | 140 | 48 | 2.1     | 76     | 129    | 2                       |  |
| 1313                       | 65              | 140 | 33 | 2.1     | 76     | 129    | 2                       |  |
| 2213                       | 65              | 120 | 31 | 1.5     | 73     | 112    | 1.5                     |  |
| 1213                       | 65              | 120 | 23 | 1.5     | 73     | 112    | 1.5                     |  |
| 2312                       | 60              | 130 | 46 | 2.1     | 71     | 119    | 2                       |  |
| 1312                       | 60              | 130 | 31 | 2.1     | 71     | 119    | 2                       |  |
| 2212                       | 60              | 110 | 28 | 1.5     | 68     | 102    | 1.5                     |  |
| 1212                       | 60              | 110 | 22 | 1.5     | 68     | 102    | 1.5                     |  |
| 2311                       | 55              | 120 | 43 | 2       | 64     | 111    | 2                       |  |
| 1311                       | 55              | 120 | 29 | 2       | 64     | 111    | 2                       |  |
| 2211                       | 55              | 100 | 25 | 1.5     | 63     | 92     | 1.5                     |  |
| 1211                       | 55              | 100 | 21 | 1.5     | 63     | 92     | 1.5                     |  |
| 2310                       | 50              | 110 | 40 | 2       | 59     | 101    | 2                       |  |
| 1310                       | 50              | 110 | 27 | 2       | 59     | 101    | 2                       |  |
| 2210                       | 50              | 90  | 23 | 1.1     | 56.5   | 83.5   | 1                       |  |
| 1210                       | 50              | 90  | 20 | 1.1     | 56.5   | 83.5   | 1                       |  |
| 2309                       | 45              | 100 | 36 | 1.5     | 53     | 92     | 1.5                     |  |
| 1309                       | 45              | 100 | 25 | 1.5     | 53     | 92     | 1.5                     |  |
| 2209                       | 45              | 85  | 23 | 1.1     | 51.5   | 78.5   | 1                       |  |
| 1209                       | 45              | 85  | 19 | 1.1     | 51.5   | 78.5   | 1                       |  |
| 2308                       | 40              | 90  | 33 | 1.5     | 48     | 82     | 1.5                     |  |

Self-aligning Ball Bearing (SSiC)

|      |    |    |    |     |      |      |     |
|------|----|----|----|-----|------|------|-----|
| 1308 | 40 | 90 | 23 | 1.5 | 48   | 82   | 1.5 |
| 2208 | 40 | 80 | 23 | 1.1 | 46.5 | 73.5 | 1   |
| 1208 | 40 | 80 | 18 | 1.1 | 46.5 | 73.5 | 1   |
| 2307 | 35 | 80 | 31 | 1.5 | 43   | 72   | 1.5 |
| 1307 | 35 | 80 | 21 | 1.5 | 43   | 72   | 1.5 |
| 2207 | 35 | 72 | 23 | 1.1 | 41.5 | 65.5 | 1   |
| 1207 | 35 | 72 | 17 | 1.1 | 41.5 | 65.5 | 1   |
| 2306 | 30 | 72 | 27 | 1.1 | 36.5 | 65.5 | 1   |
| 1306 | 30 | 72 | 19 | 1.1 | 36.5 | 65.5 | 1   |