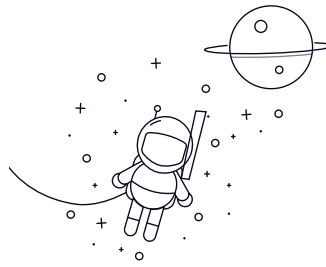


## Self-aligning Ball Bearing (ZrO<sub>2</sub>)



select Inquiry	Bearing No.	Dimentions(mm)			Mounting Dimentions(mm)			Reference Weight(kg)
		d	D	B	r(min)	da min	Da max	
135	5	19	6	0.3	7	17	0.3	0.007
126	6	19	6	0.3	8	17	0.3	0.007
127	7	22	7	0.3	9	20	0.3	0.011
108	8	22	7	0.3	10	20	0.3	0.011
129	9	26	8	0.6	13	22	0.6	0.017
1200	10	30	9	0.6	14	26	0.6	0.026
2200	10	30	14	0.6	14	26	0.6	0.036
1300	10	25	11	0.6	14	31	0.6	0.045
2300	10	25	17	0.6	14	31	0.6	0.065
1201	12	32	10	0.6	16	28	0.6	0.031
2201	12	32	14	0.6	16	28	0.6	0.041
1301	12	37	12	1	17	32	1	0.052
2301	12	37	17	1	17	32	1	0.073
1202	15	35	11	0.6	19	31	0.6	0.038
2202	15	35	14	0.6	19	31	0.6	0.046
1302	15	42	13	1	20	37	1	0.072
2302	15	42	17	1	20	37	1	0.088
1203	17	40	12	0.6	21	36	0.6	0.056
2203	17	40	16	0.6	21	36	0.6	0.068
1303	17	47	14	1	22	42	1	0.1
2303	17	47	19	1	22	42	1	0.12
1204	20	47	14	1	25	42	1	0.09
2204	20	47	18	1	25	42	1	0.11

Self-aligning Ball Bearing (ZrO<sub>2</sub>)

1304	20	52	15	1.1	26.5	45.5	1	0.13
1304	20	52	21	1.1	26.5	45.5	1	0.16
1205	25	52	15	1	30	47	1	0.11
2205	25	52	18	1	30	47	1	0.13
1305	25	62	17	1.1	31.5	55.5	1	0.2
2305	25	62	24	1.1	31.5	55.5	1	0.26
1206	30	62	16	1	35	57	1	0.17