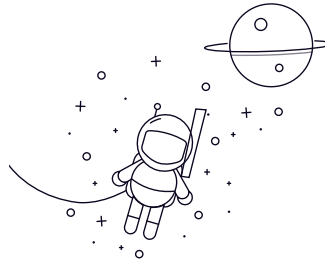


N300 Series



select Inquiry Designation			Principal Dimensions(mm)						Basic Load Ratings(KN)		Limited Speed(rpm)	Weight
d	D	B	rs	min	rs1	min	Dynamic(Cr)	Static(Cor)	Grease	Oil	(kg)	
N308	40	90	23	1.5	1.5	58.5	57	8000	9400	0.643		
N309	45	100	25	1.5	1.5	74	71	7200	8400	0.857		
N310	50	110	27	2	2	87	86	6500	7700	1.11		
N311	55	120	29	2	2	111	111	5900	7000	1.42		
N312	60	130	31	2.1	2.1	124	126	5500	6500	1.76		
N313	65	140	33	2.1	2.1	135	139	5100	6000	2.18		
N314	70	150	35	2.1	2.1	158	168	4700	5500	2.65		
N315	75	160	37	2.1	2.1	190	205	4400	5200	3.21		
N316	80	170	39	2.1	2.1	190	207	4100	4800	3.77		
N317	85	180	41	3	3	212	228	3900	4600	4.44		
N318	90	190	43	3	3	240	265	3700	4300	5.18		
N319	95	200	45	3	3	259	285	3400	4000	5.99		
N320	100	215	47	3	3	299	335	3300	3800	7.32		
N321	105	225	49	3	3	320	360	3100	3700	8.33		
N322	110	240	50	3	3	360	400	3000	3500	9.77		
N324	120	260	55	3	3	450	510	2700	3200	12.5		
N326	130	280	58	4	4	560	665	2500	2900	17		
N328	140	300	62	4	4	615	745	2300	2700	20.7		
N330	150	320	65	4	4	665	805	2100	2500	24.7		