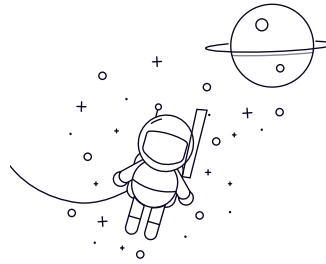


NUP300 Series



select	Inquiry Designation	Principal Dimensions(mm)						Basic Load Ratings(KN)		Limited Speed(rpm)		Weight (kg)
		d	D	B	rs	min rs	1min	Dynamic(Cr)	Static(Cor)	Grease	Oil	
NUP304E	20	52	15	1.1	0.6	31.5	26.9	13000	15000	0.176		
NUP305E	25	62	17	1.1	1.1	41.5	37.5	11000	13000	0.275		
NUP306E	30	72	19	1.1	1.1	53	50	9300	11000	0.398		
NUP307E	35	80	21	1.5	1.1	71	71	8100	9600	0.545		
NUP308	40	90	23	1.5	1.5	58.5	57	8000	9400	0.658		
NUP308E	40	90	23	1.5	1.5	83	81.5	7200	8500	0.754		
NUP309	45	100	25	1.5	1.5	74	71	7200	8400	0.877		
NUP309E	45	100	25	1.5	1.5	97.5	98.5	6500	7600	0.996		
NUP310	50	110	27	2	2	87	86	6500	7700	1.14		
NUP310E	50	110	27	2	2	110	113	5900	6900	1.3		
NUP311	55	120	29	2	2	111	111	5900	7000	1.45		
NUP311E	55	120	29	2	2	137	143	5300	6300	1.65		
NUP312	60	130	31	2.1	2.1	124	126	5500	6500	1.8		
NUP312E	60	130	31	2.1	2.1	150	157	4900	5800	2.05		
NUP313	65	140	33	2.1	2.1	135	139	5100	6000	2.23		
NUP313E	65	140	33	2.1	2.1	181	191	4600	5400	2.54		
NUP314	70	150	35	2.1	2.1	158	168	4700	5500	2.71		
NUP314E	70	150	35	2.1	2.1	205	222	4200	5000	3.1		
NUP315	75	160	37	2.1	2.1	190	205	4400	5200	3.28		
NUP315E	75	160	37	2.1	2.1	240	263	4000	4700	3.74		
NUP316	80	170	39	2.1	2.1	190	207	4100	4800	3.86		
NUP316E	80	170	39	2.1	2.1	256	282	3700	4400	4.22		
NUP317	85	180	41	3	3	212	228	3900	4600	4.54		
NUP317E	85	180	41	3	3	291	330	3500	4100	4.81		

NUP300 Series

NUP318	90	190	43	3	3	240	265	3700	4300	5.3
NUP318E	90	190	43	3	3	315	355	3300	3900	5.72
NUP319	95	200	45	3	3	259	285	3400	4000	6.13
NUP319E	95	200	45	3	3	335	385	3100	3600	6.62
NUP320	100	215	47	3	3	299	335	3300	3800	7.49
NUP320E	100	215	47	3	3	380	425	2900	3500	8.57