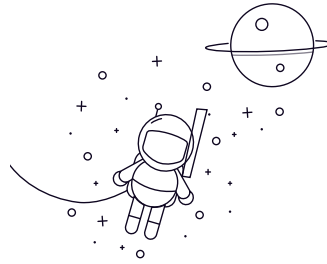


NJ200 Series



| select | Inquiry | Designation | Principal Dimensions(mm) | | | | | | Basic Load Ratings(KN) | | Limited Speed(rpm) | Weight (kg) |
|--------|---------|-------------|--------------------------|-----|-----|------|--------|-------|------------------------|-------------|--------------------|-------------|
| | | | d | D | B | rs | min rs | 1min | Dynamic(Cr) | Static(Cor) | Grease | |
| NJ206E | 30 | 62 | 16 | 1 | 0.6 | 39 | 37.5 | 11000 | 13000 | 0.226 | | |
| NJ207E | 35 | 72 | 17 | 1.1 | 0.6 | 50.5 | 50 | 9500 | 11000 | 0.327 | | |
| NJ204E | 20 | 47 | 14 | 1 | 0.6 | 25.7 | 22.6 | 15000 | 18000 | 0.122 | | |
| NJ205E | 25 | 52 | 15 | 1 | 0.6 | 29.3 | 27.7 | 13000 | 15000 | 0.151 | | |
| NJ208 | 40 | 80 | 18 | 1.1 | 1.1 | 43.5 | 43 | 9400 | 11000 | 0.378 | | |
| NJ208E | 40 | 80 | 18 | 1.1 | 1.1 | 55.5 | 55.5 | 8500 | 10000 | 0.426 | | |
| NJ209 | 45 | 85 | 19 | 1.1 | 1.1 | 46 | 47 | 8400 | 9900 | 0.432 | | |
| NJ209E | 45 | 85 | 19 | 1.1 | 1.1 | 63 | 66.5 | 7600 | 9000 | 0.495 | | |
| NJ210 | 50 | 90 | 20 | 1.1 | 1.1 | 48 | 51 | 7600 | 9000 | 0.47 | | |
| NJ210E | 50 | 90 | 20 | 1.1 | 1.1 | 66 | 72 | 6900 | 8100 | 0.54 | | |
| NJ211 | 55 | 100 | 21 | 1.5 | 1.1 | 58 | 62.5 | 6900 | 8200 | 0.638 | | |
| NJ211E | 55 | 100 | 21 | 1.5 | 1.1 | 82.5 | 93 | 6300 | 7400 | 0.718 | | |
| NJ212 | 60 | 110 | 22 | 1.5 | 1.5 | 68.5 | 75 | 6400 | 7600 | 0.818 | | |
| NJ212E | 60 | 110 | 22 | 1.5 | 1.5 | 97.5 | 107 | 5800 | 6800 | 0.923 | | |
| NJ213 | 65 | 120 | 23 | 1.5 | 1.5 | 84 | 94.5 | 5900 | 7000 | 1.02 | | |
| NJ213E | 65 | 120 | 23 | 1.5 | 1.5 | 108 | 119 | 5400 | 6300 | 1.21 | | |
| NJ214 | 70 | 125 | 24 | 1.5 | 1.5 | 83.5 | 95 | 5500 | 6500 | 1.12 | | |
| NJ214E | 70 | 125 | 24 | 1.5 | 1.5 | 119 | 137 | 5000 | 5900 | 1.3 | | |
| NJ215 | 75 | 130 | 25 | 1.5 | 1.5 | 96.5 | 111 | 5100 | 6000 | 1.23 | | |
| NJ215E | 75 | 130 | 25 | 1.5 | 1.5 | 130 | 156 | 4700 | 5500 | 1.41 | | |
| NJ216 | 80 | 140 | 26 | 2 | 2 | 106 | 122 | 4800 | 5700 | 1.5 | | |
| NJ216E | 80 | 140 | 26 | 2 | 2 | 139 | 167 | 4400 | 5100 | 1.67 | | |
| NJ217 | 85 | 150 | 28 | 2 | 2 | 120 | 140 | 4500 | 5300 | 1.87 | | |

NJ200 Series

| | | | | | | | | | | |
|--------|-----|-----|----|-----|-----|-----|-----|------|------|------|
| NJ217E | 85 | 150 | 28 | 2 | 2 | 167 | 199 | 4100 | 4800 | 2.11 |
| NJ218 | 90 | 160 | 30 | 2 | 2 | 152 | 178 | 4300 | 5000 | 2.3 |
| NJ218E | 90 | 160 | 30 | 2 | 2 | 182 | 217 | 3900 | 4600 | 2.44 |
| NJ219 | 95 | 170 | 32 | 2.1 | 2.1 | 166 | 195 | 4000 | 4700 | 2.78 |
| NJ219E | 95 | 170 | 32 | 2.1 | 2.1 | 220 | 265 | 3600 | 4300 | 3.02 |
| NJ220 | 100 | 180 | 34 | 2.1 | 2.1 | 183 | 217 | 3800 | 4500 | 3.33 |
| NJ221 | 105 | 190 | 36 | 2.1 | 2.1 | 201 | 241 | 3600 | 4300 | 3.95 |