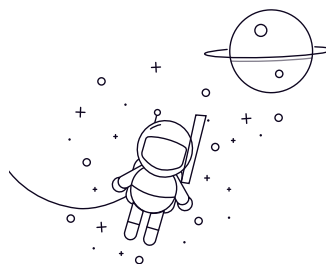


6200 Series



select Inquiry No.	Size										Rated load(N)		Weight(kg)
	d		D		B				Chamfering		Cr	Cor	
	mm	inch	mm	inch	Open Type		Shielded Type		rsmin (r)				
					mm	inch	mm	inch	mm	inch			
623	3	0.1181	10	0.3937	4	0.1575	4	0.1575	0.15	0.006	640	220	0.0016
624	4	0.1575	13	0.5118	5	0.1969	5	0.1969	0.2	0.008	1150	400	0.0032
625	5	0.1969	16	0.6299	5	0.1969	5	0.1969	0.3	0.012	1880	680	0.0051
626	6	0.2362	19	0.748	6	0.2362	6	0.2362	0.3	0.012	2800	1060	0.0086
627	7	0.2756	22	0.8661	7	0.2756	7	0.2756	0.3	0.012	3290	1360	0.0131
628	8	0.315	24	0.9449	8	0.315	8	0.315	0.3	0.012	3330	1410	0.017
629	9	0.3543	26	1.0236	8	0.315	8	0.315	0.3	0.012	4160	1780	0.0191
6200	10	0.3937	30	1.1811	9	0.3543	9	0.3543	0.6	0.024	5110	2380	0.032
6201	12	0.4724	32	1.2598	10	0.3937	10	0.3937	0.6	0.024	6180	3060	0.037
6202	15	0.5906	35	1.378	11	0.4331	11	0.4331	0.6	0.024	7450	3700	0.045
6203	17	0.6693	40	1.5748	12	0.4724	12	0.4724	0.6	0.024	9560	4780	0.065
6204	20	0.7874	47	1.8504	14	0.5512	14	0.5512	1	0.039	12840	6650	0.106
6205	25	0.9843	52	2.0472	15	0.5906	15	0.5906	1	0.039	14020	7930	0.128
6206	30	1.1811	62	2.4409	16	0.6299	16	0.6299	1	0.039	19460	11310	0.199
6207	35	1.378	72	2.8346	17	0.6693	17	0.6693	1.1	0.043	25670	15300	0.288
6208	40	1.5748	80	3.1496	18	0.7087	18	0.7087	1.1	0.043	29520	18140	0.366
62/22	22	0.8661	50	1.9685	14	0.5512	14	0.5512	1	0.039	13900	6950	0.12
62/28	28	1.1024	58	2.2835	16	0.6299	16	0.6299	1	0.039	17900	9750	0.175
62/32	32	1.2598	65	2.5591	17	0.6693	17	0.6693	1	0.039	22400	13100	0.23