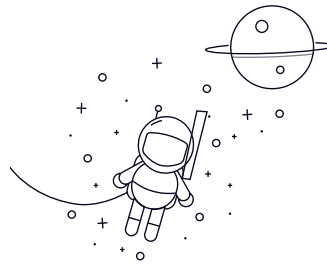
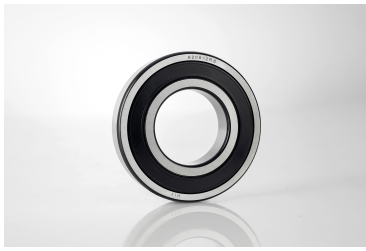


## 6900 Series



select Inquiry	No.	Size										Rated load(N)		Weight(kg)
		d		D		B				Chamfering		Cr	Cor	
		mm	inch	mm	inch	Open Type		Shielded Type		rsmin (r)				
						mm	inch	mm	inch	mm	inch			
693	3	0.1181	8	0.315	3	0.1181	4	0.1575	0.15	0.006	430	170	0.0008	
6944	4	0.1575	11	0.4331	4	0.1575	4	0.1575	0.15	0.006	960	350	0.0017	
695	5	0.1969	13	0.5118	4	0.1575	4	0.1575	0.2	0.008	1070	420	0.0023	
696	6	0.2362	15	0.5906	5	0.1969	5	0.1969	0.2	0.008	1470	600	0.0036	
697	7	0.2756	17	0.6693	5	0.1969	5	0.1969	0.3	0.012	1600	710	0.005	
698	8	0.315	19	0.748	6	0.2362	6	0.2362	0.3	0.012	2230	910	0.0076	
699	9	0.3543	20	0.7874	6	0.2362	6	0.2362	0.3	0.012	2480	1090	0.0085	
6900	10	0.3937	22	0.8661	6	0.2362	6	0.2362	0.3	0.012	2690	1270	0.01	
6901	12	0.4724	24	0.9449	6	0.2362	6	0.2362	0.3	0.012	2890	1460	0.012	
6902	15	0.5906	28	1.1024	7	0.2756	7	0.2756	0.3	0.012	4320	2250	0.018	
6903	17	0.6693	30	1.1811	7	0.2756	7	0.2756	0.3	0.012	4590	2550	0.019	
6904	20	0.7874	37	1.4567	9	0.3543	9	0.3543	0.3	0.012	6370	3680	0.038	
6905	25	0.9843	42	1.6535	9	0.3543	9	0.3543	0.3	0.012	6660	4180	0.044	
6906	30	1.1811	47	1.8504	9	0.3543	9	0.3543	0.3	0.012	7240	5010	0.05	
6907	35	1.378	55	2.1654	10	0.3543	10	0.3937	0.6	0.024	10390	7160	0.75	
6908	40	1.5748	62	2.4409	12	0.3937	12	0.4724	0.6	0.024	13020	9200	0.118	
6909	45	1.7717	68	2.6772	12	0.4724	12	0.4724	0.6	0.024	13490	10130	0.128	
6910	50	1.9685	72	2.8346	12	0.4724	12	0.4724	0.6	0.024	13900	10990	0.133	
6911	55	2.1654	80	3.1496	13	0.4724	13	0.5118	1	0.039	14820	12690	0.177	
6912	60	2.3622	85	3.3465	13	0.5118	13	0.5118	1	0.039	15080	13480	0.191	
6913	65	2.5591	90	3.5433	13	0.5118	13	0.5118	1	0.039	19950	17490	0.2	
6914	70	2.7559	100	3.937	16	0.6299	16	0.6299	1	0.039	25950	21850	0.327	
6915	75	2.9528	105	4.1339	16	0.6299	16	0.6299	1	0.039	26780	23560	0.345	
6916	80	3.1496	110	4.3307	16	0.6299	16	0.6299	1	0.039	27590	25280	0.363	
6917	85	3.3465	120	4.7244	18	0.7087	18	0.7087	1.1	0.043	31900	29700	0.517	
6918	90	3.5433	125	4.9213	18	0.7087	18	0.7087	1.1	0.043	32800	31500	0.54	

## 6900 Series

---

6919	95	3.7402	130	5.1181	18	0.7087	18	0.7087	1.1	0.043	33700	33300	0.567
6920	100	3.937	140	5.5118	20	0.7874	20	0.7874	1.1	0.043	39901	39135	0.771
6921	105	4.1339	145	5.7087	20	0.7874	20	0.7874	1.1	0.043	41005	41410	0.793
6922	110	4.3307	150	5.9055	20	0.7874	20	0.7874	1.1	0.043	42090	43537	0.83