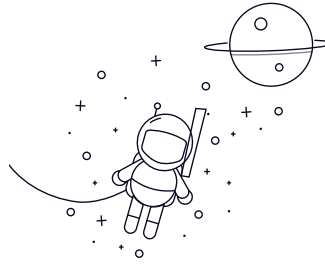


Non-standard Series



select	Inquiry	No.	Size								Chamfering		Rated load(N)		Weight(kg)		
			d		D		B		Open Type		Shielded Type		rsmn (r)			Cr	Cor
			mm	inch	mm	inch	mm	inch	mm	inch	mm	inch	mm	inch			
6201-8	12.7	0.5	32	1.2598	10	0.3937	10	0.3937	0.6	0.024	6180	3060	0.0333				
6201-10	15.875	0.625	32	1.2598	10	0.3937	10	0.3937	0.6	0.024	6180	1360	0.033				
6201-13	13	0.5118	32	1.2598	10	0.3937	10	0.3937	0.6	0.024	6180	2630	0.033				
6202-8	12.7	0.5	35	1.378	11	0.4331	11	0.4331	0.6	0.024	7450	3700	0.0475				
6202-10	15.875	0.625	35	1.378	11	0.4331	11	0.4331	0.6	0.024	7450	3700	0.042				
6202-13	13	0.5118	35	1.378	11	0.4331	11	0.4331	0.6	0.024	7450	3700	0.0472				
6202-14	14	0.5512	35	1.378	11	0.4331	11	0.4331	0.6	0.024	7450	3700	0.0465				
6202-16	16	0.6299	35	1.378	11	0.4331	11	0.4331	0.6	0.024	7450	3700	0.042				
6203-8	12.7	0.5	40	1.5748	12	0.4724	12	0.4724	0.6	0.024	9560	4780	0.073				
6203-10	15.875	0.625	40	1.5748	12	0.4724	12	0.4724	0.6	0.024	9560	4780	0.066				
6203-12	19.05	0.75	40	1.5748	12	0.4724	12	0.4724	0.6	0.024	9560	4780	0.058				
6203-13	13	0.5118	40	1.5748	12	0.4724	12	0.4724	0.6	0.024	9560	4780	0.0727				
6203-15	15	0.5906	40	1.5748	12	0.4724	12	0.4724	0.6	0.024	9560	4780	0.0665				
6203-16	16	0.6299	40	1.5748	12	0.4724	12	0.4724	0.6	0.024	9560	4780	0.066				
6204-10	15.875	0.625	47	1.8504	14	0.5512	14	0.5512	1	0.039	12840	6650	0.1115				
6204-12	19.05	0.75	47	1.8504	14	0.5512	14	0.5512	1	0.039	12840	6650	0.11				
99502H	15.875	0.625	34.93	1.375	11	0.4331	11	0.4331	0.6	0.024	7450	3700	0.042				