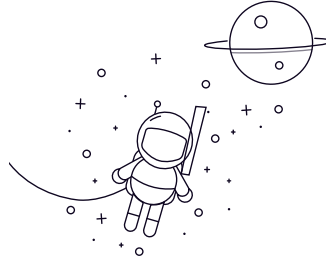


Inch RMS Series



| select | Inquiry | No. | Size | | | | | | | | | | Rated load(N) | | Weight(kg) |
|--------|---------|-------|-------|--------|--------|--------|-----------|--------|---------------|--------|------------|-------|---------------|------|------------|
| | | | d | | D | | B | | | | Chamfering | | Cr | Cor | |
| | | | mm | inch | mm | inch | Open Type | | Shielded Type | | rsmin (r) | | | | |
| | | | | | | | mm | inch | mm | inch | mm | inch | mm | inch | |
| RMS4 | 12.7 | 0.5 | 41.28 | 1.625 | 15.875 | 0.625 | 15.875 | 0.625 | 1 | 0.0039 | 7350 | 4410 | 0.1076 | | |
| RMS5 | 15.875 | 0.625 | 46.04 | 1.8126 | 15.875 | 0.625 | 15.875 | 0.625 | 1 | 0.0039 | 9880 | 6200 | 0.1172 | | |
| RMS6 | 19.05 | 0.75 | 50.8 | 2 | 17.46 | 0.6874 | 17.46 | 0.6874 | 1 | 0.0039 | 10450 | 6560 | 0.1606 | | |
| RMS7 | 22.225 | 0.875 | 57.15 | 2.25 | 17.46 | 0.6874 | 17.46 | 0.6874 | 1.1 | 0.0043 | 10780 | 6980 | 0.223 | | |
| RMS8 | 25.4 | 1 | 63.5 | 2.5 | 19.5 | 0.75 | 19.5 | 0.75 | 1.1 | 0.0043 | 17220 | 11390 | 0.259 | | |
| RMS9 | 28.575 | 1.125 | 71.44 | 2.8126 | 20.64 | 0.8126 | 20.64 | 0.8126 | 1.1 | 0.0043 | 22840 | 15680 | 0.372 | | |
| RMS10 | 31.75 | 1.25 | 79.37 | 3.125 | 22.23 | 0.8752 | 22.23 | 0.8752 | 1.1 | 0.0043 | 26700 | 17570 | 0.542 | | |
| RMS11 | 34.925 | 1.375 | 88.9 | 3.5 | 22.23 | 0.8752 | 22.23 | 0.8752 | 1.5 | 0.059 | 28400 | 20900 | 0.7 | | |
| RMS12 | 38.1 | 1.5 | 95.25 | 3.75 | 23.81 | 0.9374 | 23.81 | 0.9374 | 1.5 | 0.059 | 31390 | 22380 | 0.8 | | |